

# THE FINAL COUNTDOWN

EUROPE

Rock

♩ = 114

18

The first section of the score consists of four staves. The top staff is a vocal line starting with a rest for 18 measures, followed by a melodic phrase. The second staff is a guitar line with a repeating eighth-note pattern. The third staff is a bass line with a simple eighth-note accompaniment. The fourth staff is a drum line with a consistent eighth-note pattern.

COUPLET

The 'COUPLET' section consists of four staves. The top staff is a guitar line with a repeating eighth-note pattern. The second staff is a bass line with a simple eighth-note accompaniment. The third staff is a drum line with a consistent eighth-note pattern. The fourth staff is a vocal line with a melodic phrase.

THEMA

The 'THEMA' section consists of one staff, which is a guitar line with a repeating eighth-note pattern.

FINAL COUNTDOWN

Musical notation for the first system of 'FINAL COUNTDOWN'. The top staff is a guitar line with a double bar line and first/second endings. The bottom staff is a bass line with a double bar line.

Musical notation for the second system of 'FINAL COUNTDOWN', featuring a bass line with a double bar line.

Musical notation for the third system of 'FINAL COUNTDOWN', featuring a guitar line with accents and a bass line.

QUITAR SOLO

Musical notation for the first system of 'QUITAR SOLO', featuring a guitar line with a double bar line and a bass line.

Musical notation for the second system of 'QUITAR SOLO', featuring a bass line with a double bar line.

THEMA

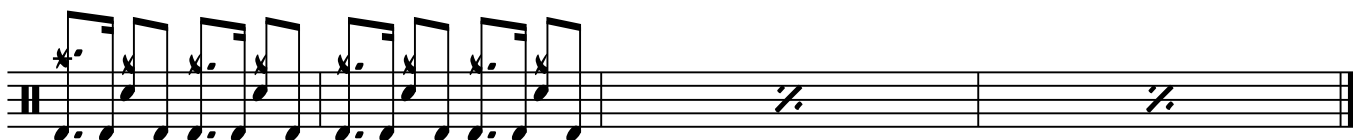
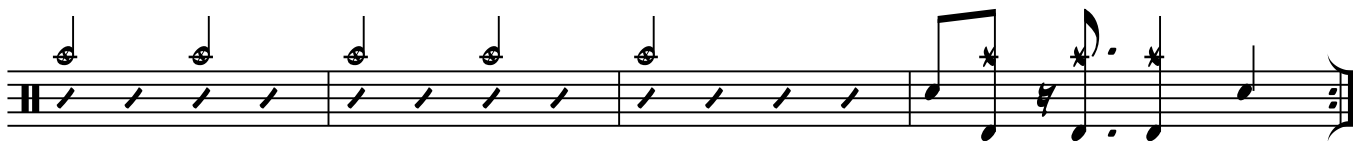
Musical notation for the first system of 'THEMA', featuring a guitar line with a double bar line and a bass line.

Musical notation for the second system of 'THEMA', featuring a guitar line with a double bar line and a bass line.

Musical notation for the third system of 'THEMA', featuring a guitar line with accents and a bass line.

Musical notation for the fourth system of 'THEMA', featuring a guitar line with a double bar line and a bass line.

FINAL COUNTDOWN



FADE OUT